

# Chapter 1

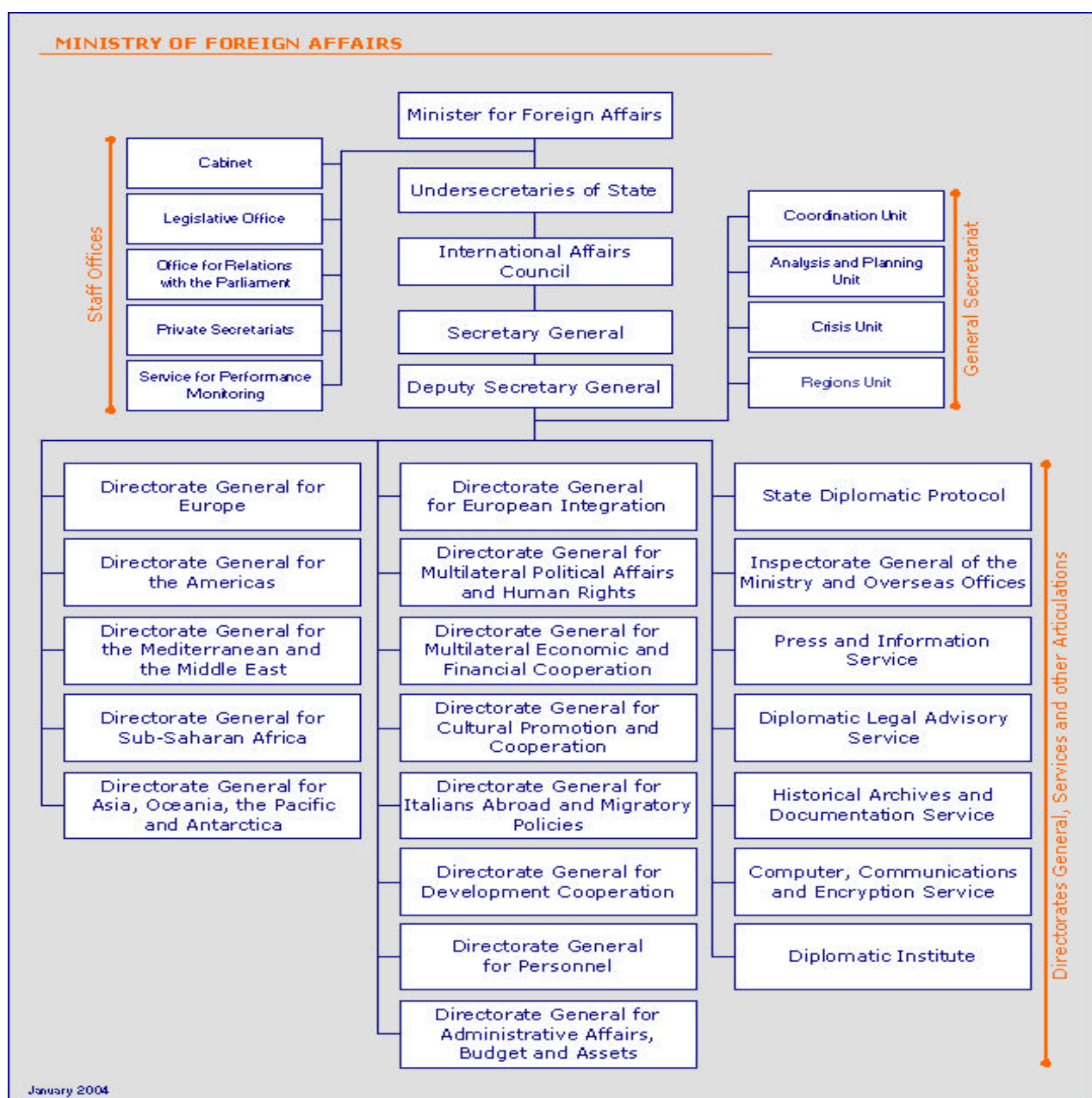
## Structure and Resources



## Introduction

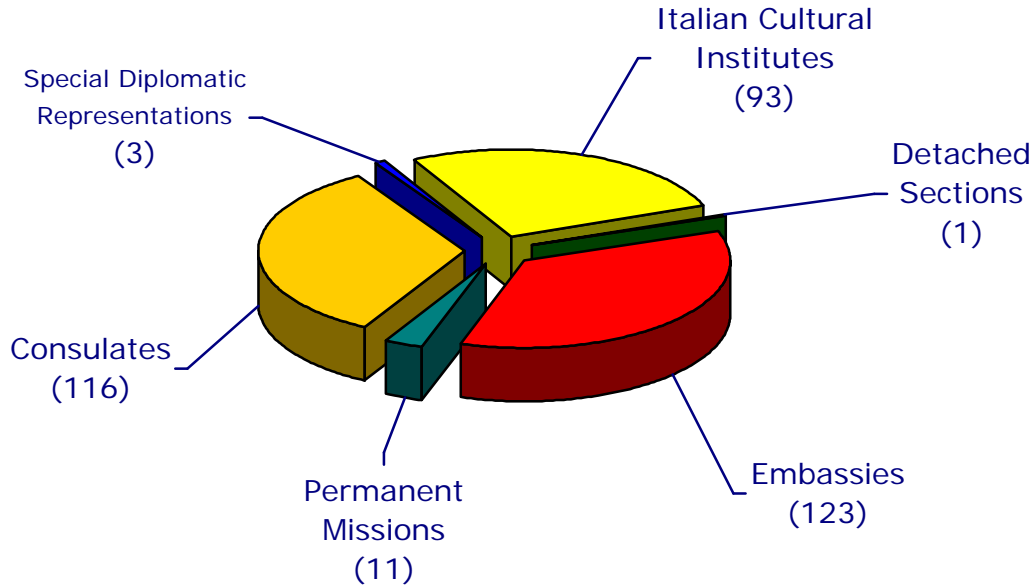
The statistics shown in this Chapter concern the organization of the central headquarters (Farnesina) and the overall network abroad (Embassies, Permanent Missions, Consulates, Special Diplomatic Representations and Italian Cultural Institutes), as well as the Ministry's human and financial resources.

**Organization.** According to the reform of 2000 the structure of the Ministry of Foreign Affairs consists now of 13 Directorates General, 4 Services and other articulations dedicated to specific tasks, as seen in the following chart:



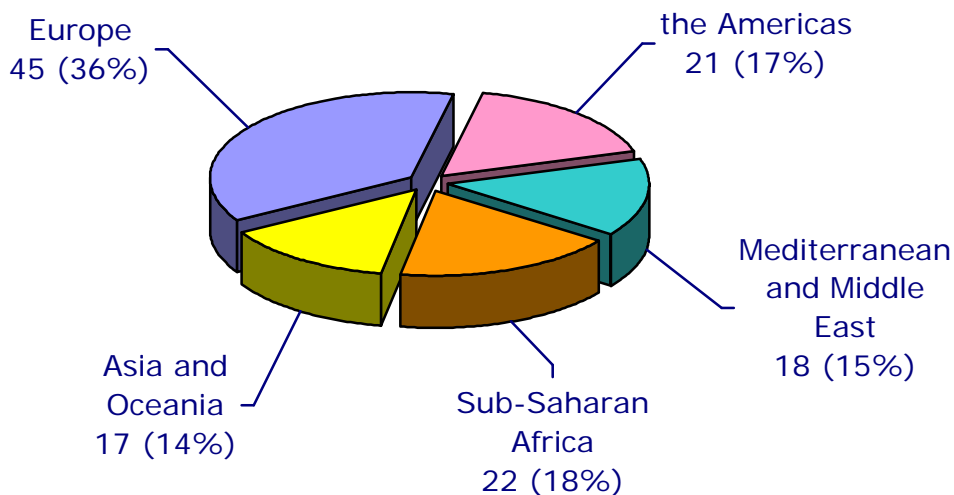
There have been no significant variations in the network abroad, as compared with the previous year: the number of Embassies (123), Consulates (116) and Italian Cultural Institutes (93) has remained the same (Fig. 1.1).

**Figure 1.1 – Network of Missions abroad (2003)**



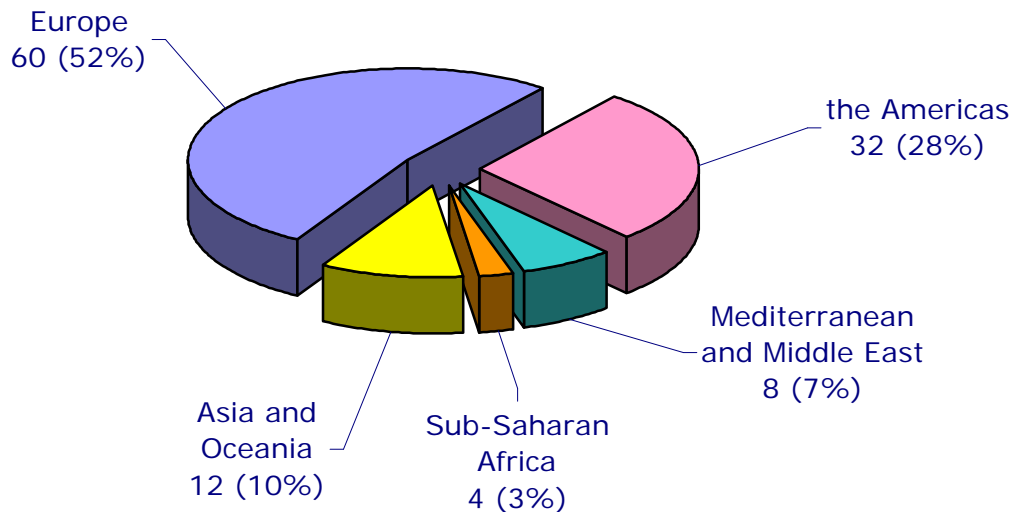
As regards the territorial distribution of the Embassies (Fig. 1.2) it can be seen that 45 (36% of total) are located in Europe, while the remaining 78 (64%) are distributed almost uniformly among the other four geographical areas (17% in the Americas, 15% in the Mediterranean and Middle East, 18% in Sub-Saharan Africa and 14% in Asia and Oceania).

**Figure 1.2 – Embassies by geographical area (2003)**



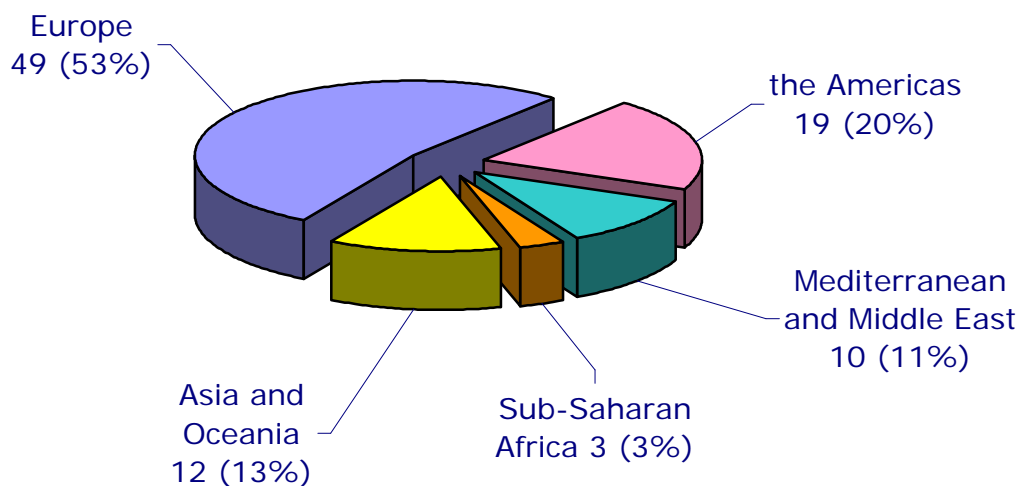
By comparison, the territorial distribution of the Consulates is different (Fig. 1.3): 60 (52% of the total) are located in Europe, 32 (28%) in the Americas, 12 (10%) in Asia and Oceania area, 8 (7%) in Mediterranean and Middle East and, finally, 4 (3%) in Sub-Saharan Africa.

**Figure 1.3 – Consulates by geographical area (2003)**



As regards the Italian Cultural Institutes (Fig. 1.4) it can be seen that 49 (53%) are located in Europe, 19 (20%) in the Americas, 10 in Mediterranean and Middle East (11%), 3 in Sub-Saharan Africa (3%) and 12 in Asia and Oceania (13%).

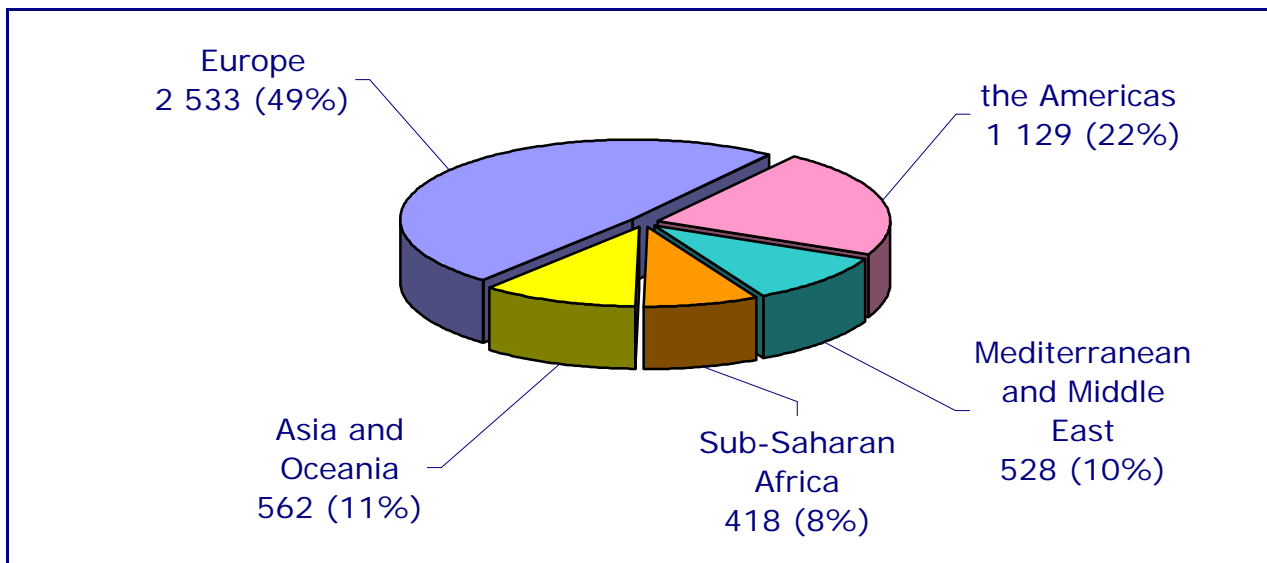
**Figure 1.4 – Italian Cultural Institutes by geographical area (2003)**



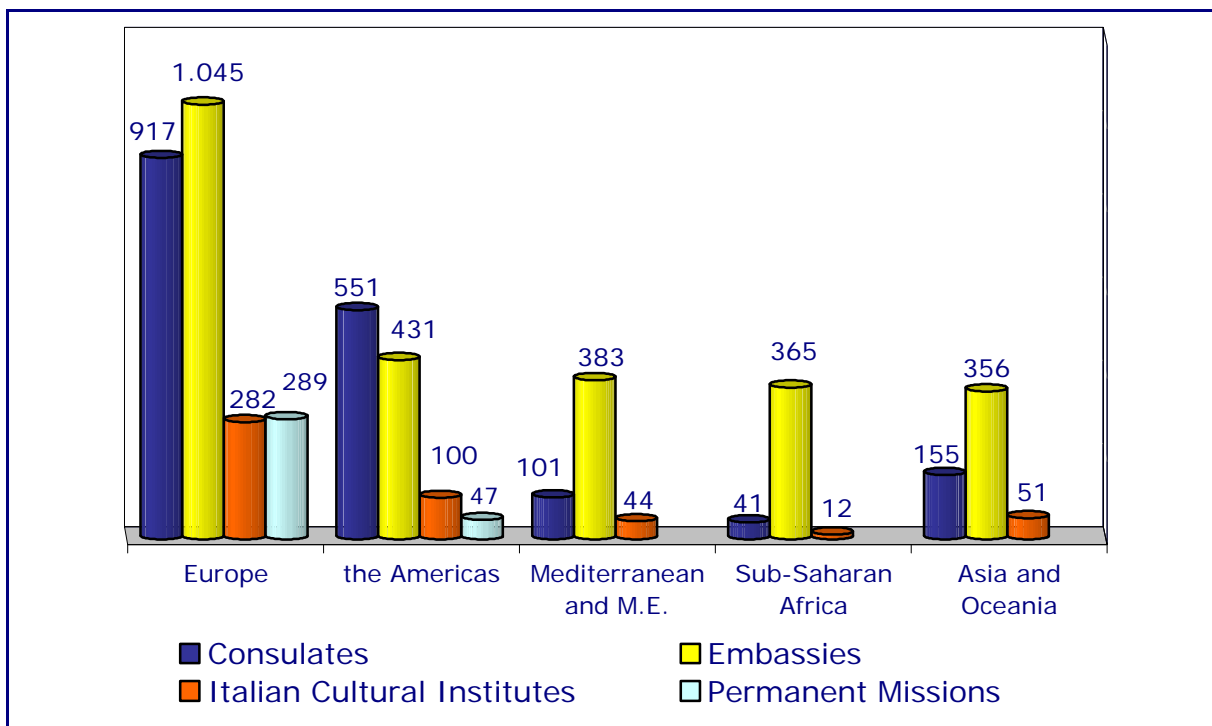
**Human resources.** The Ministry of Foreign Affairs avails itself of the services of 8 056 persons, 5 300 of whom are permanent staff, 2 244 locally engaged staff abroad, and 512 experts and employees from other Ministries. There are 2 886 persons working in the central headquarters and 5 170 abroad.

Personnel abroad (Fig. 1.5), working in Embassies, Consulates and Permanent Missions, included locally engaged staff, are located 49% in Europe, 22% in the Americas, 11% in Asia and Oceania, 10% in Mediterranean and Middle East and 8% in Sub-Saharan Africa.

**Figure 1.5 – Total staff abroad by geographical area (2003)**

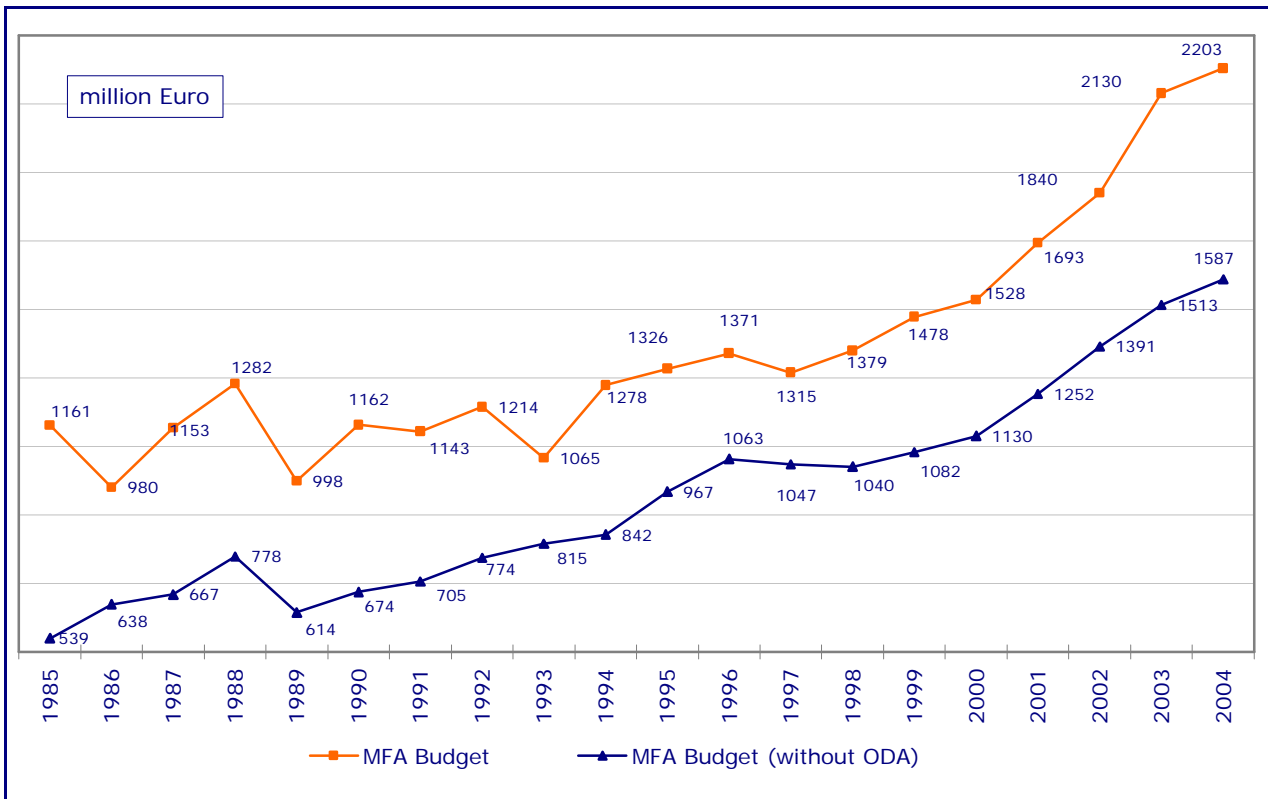


**Figure 1.6 – Total staff abroad Offices (2003)**

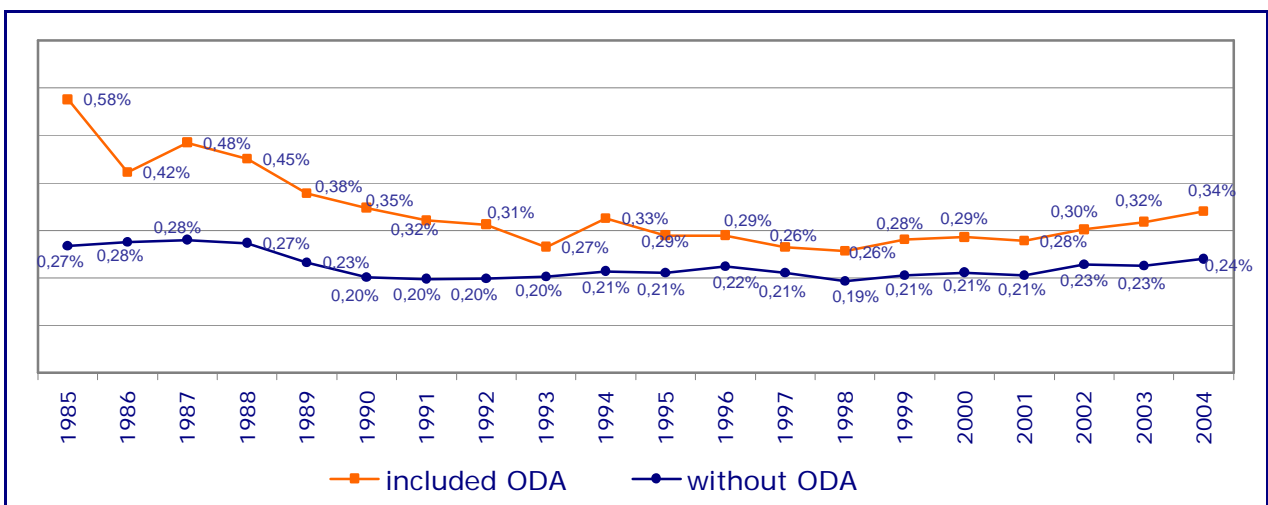


**Financial resources.** Since the late 90's the MFA Budget has been showing an increasing trend. In 2004, the budget allotted to the MFA is 2 203 million Euro, equal to 0.34% of the national budget, but without the Official Development Assistance (ODA) funds, this figure drops to 1 587 million Euro, equal to only 0.24% of the national budget (Fig. 1.7 and 1.8).

**Figure 1.7 – MFA Budget (1985-2004)**



**Figure 1.8 – Ministry of Foreign Affairs Budget: percentage of the National Budget (1985-2004)**







## Organization

**Table 1.1 – Network of Missions abroad by type**

Type	1999	2000	2001	2002	2003
Embassies	124	122	123	123	123
Permanent Missions to International Organizations	12	12	11	11	11
Special Diplomatic Representations	3	3	3	3	3
Detached Sections of Diplomatic Representations	-	-	-	1*	1*
Consulates	125	116	114	116	116
of which:					
<i>General Consulates (I class)</i>	9	8	8	8	9
<i>General Consulates</i>	65	62	61	63	62
<i>Consulates (I class)</i>	9	8	8	8	8
<i>Consulates</i>	24	24	24	24	24
<i>Vice Consulates</i>	7	4	3	3	3
<i>Consular Agencies</i>	11	10	10	10	10
Italian Cultural Institutes	94	93	93	93	93
<b>Total</b>	<b>358</b>	<b>346</b>	<b>344</b>	<b>347</b>	<b>347</b>

Source: DGPE, DGPC, DGCS

(\*) The detached sections in Pristina of the Italian Embassy of Belgrade, established in accordance with law 109/2003 which specifically disciplines the "detached section" in question.

**Table 1.2 – Embassies by geographical area**

Geographical area	Embassies (*)				
	1999	2000	2001	2002	2003
Europe	45	45	45	45	45
The Americas	22	21	21	21	21
Mediterranean and Middle East	17	17	18	18	18
Sub-Saharan Africa	23	22	22	22	22
Asia and Oceania	17	17	17	17	17
<b>Total</b>	<b>124</b>	<b>122</b>	<b>123</b>	<b>123</b>	<b>123</b>

Source: DGPE

(\*) The figures shown include 4 non-operative Embassies: Mogadiscio (Somalia), Baghdad (Iraq), Reykjavik (Iceland) and Nouakchott (Mauritania).

**Table 1.3 – Consulates by geographical area**

Geographical area	Consulates				
	1999	2000	2001	2002	2003
Europe	65	60	59	60	60
The Americas	33	32	32	32	32
Mediterranean and Middle East	12	9	8	8	8
Sub-Saharan Africa	3	3	3	4	4
Asia and Oceania	12	12	12	12	12
<b>TOTAL</b>	<b>125</b>	<b>116</b>	<b>114</b>	<b>116</b>	<b>116</b>

Source: DGPE

**Table 1.4 – Italian Cultural Institutes by geographical area**

Geographical area	Cultural Institutes			
	2000	2001	2002	2003
Europe	49	49	49	49
The Americas	19	19	19	19
Mediterranean and Middle East	10	10	10	10
Sub-Saharan Africa	3	3	3	3
Asia and Oceania	12	12	12	12
<b>TOTAL</b>	<b>93</b>	<b>93</b>	<b>93</b>	<b>93</b>

Source: DGPC

-- Including four Institutes not yet operational (Baghdad, Hong Kong, Mumbai, Shanghai)

## Human and Financial Resources

**Table 1.5 – Permanent staff by classification**

Year	Type				TOTAL	Index (base 1990 =100)
	Diplomats	Administrative Officers & CPA	Employees	Cultural Promotion Area (CPA)		
<b>1990</b>	838	26	4 210	-	<b>5 074</b>	100.0
<b>1991</b>	863	32	4 104	-	<b>4 999</b>	98.5
<b>1992</b>	879	32	4 040	126	<b>5 077</b>	100.1
<b>1993</b>	897	32	4 014	140	<b>5 083</b>	100.2
<b>1994</b>	901	28	3 915	133	<b>4 977</b>	98.1
<b>1995</b>	901	29	3 858	134	<b>4 922</b>	97.0
<b>1996</b>	909	26	3 735	135	<b>4 805</b>	94.7
<b>1997</b>	904	24	3 716	131	<b>4 775</b>	94.1
<b>1998</b>	913	27	3 734	132	<b>4 806</b>	94.7
<b>1999</b>	934	27	3 733	128	<b>4 822</b>	95.0
<b>2000</b>	960	40	3 656	130	<b>4 786</b>	94.3
<b>2001</b>	988	50	3 902	189	<b>5 129</b>	101.1
<b>2002</b>	1 007	56	4 012	181	<b>5 256</b>	103.6
<b>2003</b>	1 024	55	4 013	208	<b>5 300</b>	104.5

Source: DGPE

-- Data included Personnel on leave, detached and in position of command.

-- The functional areas also include the following figures for Inspectors (a disappearing role): 8 (1990), 6 (1991), 6 (1992), 4 (1993), 3 (1994), 3 (1995), 3 (1996), 2 (1997), 2 (1999), 1 (2000).

-- The Cultural Promotion Area (CPA) was instituted with Law no. 401/1990.

**Table 1.6 – Non permanent staff by classification (2003)**

	Locally engaged staff	Scientific attaches and Experts	Employees from other Ministries	Total
<b>2000</b>	2 301	165	372	<b>2 838</b>
<b>2001</b>	2 299	188	287	<b>2 774</b>
<b>2002</b>	2 352	178	262	<b>2 792</b>
<b>2003</b>	2 244	181	331	<b>2 756</b>

Source: DGPE

-- Scientific attaches and Experts: personnel within the scope of Law no. 49/87, of article 168 of DPR 18 and article 16 of Law no. 401/90, and Italian Cultural Institute Directors of "chiara fama"

**Table 1.7 – Total staff abroad by classification (2003)**

	Type						Total
	Diplomats	Administrative Officers & CPA	Employees	CPA	Locally engaged staff	Scientific attaches & Experts	
Embassies	345	7	1 058	-	1 106	64	<b>2 580</b>
Consulates	111	8	904	-	739	3	<b>1 765</b>
Permanent Missions	84	-	156	-	57	39	<b>336</b>
Italian Cultural Institutes	-	9	-	125	342	13	<b>489</b>
<b>TOTAL</b>	<b>540</b>	<b>24</b>	<b>2 118</b>	<b>125</b>	<b>2 244</b>	<b>119</b>	<b>5 170</b>

Source: DGPE

-- Scientific attaches & Experts: personnel within the scope of Law no. 49/87, of article 168 of DPR 18 and article 16 of Law no. 401/90, and Italian Cultural Institute Directors of "chiara fama"

**Table 1.7.1 – Permanent Missions: total staff abroad by classification (2003)**

Permanent Missions to	Type					Total
	Diplomats	Admin. Officers & CPA	Employees	Locally engaged staff	Scientific attaches & Experts	
Council of Europe (Strasbourg)	3	-	6	4	1	<b>14</b>
Conference of Disarmament (Geneva)	3	-	9	1	-	<b>13</b>
NATO (Bruxelles)	7	-	14	7	2	<b>30</b>
OECD (Paris)	5	-	12	2	3	<b>22</b>
UN (New York)	15	-	21	10	1	<b>47</b>
FAO-IFAD (Rome)	3	-	11	-	-	<b>14</b>
International Organizations (Geneva)	9	-	15	6	2	<b>32</b>
International Organizations (Vienna)	4	-	7	6	2	<b>19</b>
OSCE (Vienna)	4	-	8	2	1	<b>15</b>
EU (Brussels)	28	-	48	17	27	<b>120</b>
UNESCO (Paris)	3	-	5	2	-	<b>10</b>
<b>TOTAL</b>	<b>84</b>	<b>-</b>	<b>156</b>	<b>57</b>	<b>39</b>	<b>336</b>

Source: DGPE

**Table 1.7.2 – Embassies: total staff abroad by classification and geographical area (2003)**

Geographical area	Type					Total
	Diplomats	Admin. Officers & CPA	Employees	Locally engaged staff	Scientific attaches & Experts	
Europe	145	4	483	393	20	<b>1 045</b>
The Americas	58	2	166	191	14	<b>431</b>
Mediterranean and Middle East	49	-	157	167	10	<b>383</b>
Sub-Saharan Africa	41	-	121	195	8	<b>365</b>
Asia and Oceania	52	1	131	160	12	<b>356</b>
<b>TOTAL</b>	<b>345</b>	<b>7</b>	<b>1 058</b>	<b>1 106</b>	<b>64</b>	<b>2 580</b>

Source: DGPE

**Table 1.7.3 – Consulates: total staff abroad by classification and geographical area (2003)**

Geographical area	Type					Total
	Diplomats	Admin. Officers & CPA	Employees	Locally engaged staff	Scientific attaches & Experts	
Europe	51	6	487	373	-	<b>917</b>
The Americas	37	1	277	233	3	<b>551</b>
Mediterranean and Middle East	7	-	55	39	-	<b>101</b>
Sub-Saharan Africa	4	-	17	20	-	<b>41</b>
Asia and Oceania	12	1	68	74	-	<b>155</b>
<b>TOTAL</b>	<b>111</b>	<b>8</b>	<b>904</b>	<b>739</b>	<b>3</b>	<b>1 765</b>

Source: DGPE

**Table 1.7.4 – Italian Cultural Institutes: total staff by classification and geographical area (2003)**

Geographical area	Type					Total
	Directors	CPA	Locally engaged staff	Directors of "chiara fama"	Experts	
Europe	3	71	202	6	-	<b>282</b>
The Americas	3	23	72	2	-	<b>100</b>
Mediterranean and Middle East	1	15	27	-	1	<b>44</b>
Sub-Saharan Africa	-	3	9	-	-	<b>12</b>
Asia and Oceania	2	13	32	1	3	<b>51</b>
<b>TOTAL</b>	<b>9</b>	<b>125</b>	<b>342</b>	<b>9</b>	<b>4</b>	<b>489</b>

Source: DGPE

**Table 1.8 – Diplomatic Service: personnel requirement**

Rank	1999	Since 2000
Ambassador	22	22
Minister Plenipotentiary	146	208
First Counsellor	190	232
Counsellor	270	270
First Secretary	310	387
<b>TOTAL</b>	<b>938</b>	<b>1 119</b>

Source: DGPE

-- The current staff posts were established by Legislative Decree no. 85 (27 of March 2000)

**Table 1.9 – Recruitment of diplomats by rank and sex (2001-2003)**

RANK	2001				2002				2003			
	M	F	Tot.	% change	M	F	Tot.	% change	M	F	Tot.	% change
Ambassador	19	-	<b>19</b>	-13.6	22	-	<b>22</b>	15.8	19	-	<b>19</b>	-13.6
Minister Plenipotentiary (a)	213	8	<b>221</b>	-2.6	211	9	<b>220</b>	-0.5	213	10	<b>223</b>	1.3
First Counsellor	221	21	<b>242</b>	3.0	224	22	<b>246</b>	1.7	223	24	<b>247</b>	0.4
Counsellor	171	22	<b>193</b>	11.6	172	24	<b>196</b>	1.6	169	22	<b>191</b>	2.5
First Secretary (b)	209	52	<b>261</b>	0.8	223	59	<b>282</b>	8.0	232	69	<b>301</b>	6.7
Secretary(c)	40	12	<b>52</b>	18.2	30	11	<b>41</b>	-21.2	32	11	<b>43</b>	4.8
<b>TOTAL</b>	<b>873</b>	<b>115</b>	<b>988</b>	<b>2.9</b>	<b>882</b>	<b>125</b>	<b>1 007</b>	<b>1.9</b>	<b>888</b>	<b>136</b>	<b>1 024</b>	<b>1.7</b>

Source: DGPE

(a) Up until 25.4.2000 rank subdivided into I and II Class.

(b) Up until 25.4.2000 rank subdivided into First Secretary and Secretary.

(c) Post instituted on 26.4.2000 and which replaces Diplomatic Volunteers.

**Table 1.10 – Recruitment of diplomats (2001-2003)**

	2001			2002			2003		
	M	F	Total	M	F	Total	M	F	Total
Applications	657	552	<b>1 209</b>	702	607	<b>1 309</b>	507	457	<b>964</b>
Candidates at the end of pre-testing	-	-	-	-	-	-	366	294	<b>660</b>
Candidates at the end of the written examination	274	161	<b>435</b>	319	195	<b>514</b>	203	147	<b>350</b>
Candidates admitted to the oral examination	49	17	<b>66</b>	37	13	<b>50</b>	39	13	<b>52</b>
Recruited	39	13	<b>52</b>	29	11	<b>40</b>	31	10	<b>41</b>

Source: DGPE

-- Only valid applications were considered

**Table 1.11 – Recruitment of diplomats by university degree (2000-2003)**

University	Admitted			
	2000	2001	2002	2003
Political Science	19	19	20	14
International and diplomatic Sciences	-	-	-	4
Law	16	24	13	17
Economics	7	6	5	6
Humanities	2	2	2	-
Foreign degree (recognized in Italy)	1	1	-	-
<b>TOTAL</b>	<b>45</b>	<b>52</b>	<b>40</b>	<b>41</b>

Source: DGPE

**Table 1.12 – Italian National Budget and Ministry of Foreign Affairs Budget**

Fiscal Year	Million Euro		
	Italian State Budget	MFA Budget without ODA (*)	% rate
1985	201 716	539	0.27
1986	231 776	638	0.28
1987	237 867	666	0.28
1988	284 399	777	0.27
1989	264 216	614	0.23
1990	334 617	674	0.20
1991	356 074	705	0.20
1992	388 762	774	0.20
1993	401 419	815	0.20
1994	393 031	842	0.21
1995	457 937	967	0.21
1996	473 257	1 062	0.22
1997	496 314	1 046	0.21
1998	537 090	1 040	0.19
1999	526 393	1 082	0.21
2000	534 301	1 129	0.21
2001	609 218	1 252	0.21
2002	609 225	1 391	0.23
2003	669 985	1 512	0.23
2004	654 486	1 586	0.24

Source: DGAA

(\*) Official Development Assistance





